

ZB: The Zobeyni (AP) sire line to the sons of Mesaoud (APS)

First generation	Second generation	Third generation	Fourth generation	Fifth generation	Sixth generation	Seventh generation	Eighth generation
ZOBAYNI (AP) ca. 1844 g FOUNDATION [Db Stallion "BARQ" x Db S-Jidranayah (Ibn Subayni) *SNUNAH] S2+ BARRAK IBN SUBAYNI of the MHAYD-FID'AN	HARKAN (AP) ca.1855 g [x HARKA (AP)] KH ABBAS PASHA / Egypt	AZIZ (APS) ca.1876 c [x AZIZA (APS)] DS2 ALI PASHA SHERIF / Egypt	NASR (APS) ca. 1886 b [x BINT AZZ (APS)] DS2 ALI PASHA SHERIF / Egypt MESAOU (APS) 1887 c [x YEMAMEH (APS)] S1.4.S ALI PASHA SHERIF / Egypt	daughter: KASIDA (APS) [KJ1]			
				REJEB (BLT)	ZB.1		
				SEYAL (BLT)	ZB.2		
				DAOUD (BLT)	ZB.3		
				NARKISE (BLT)	ZB.4		
				*ASTRALED	ZB.5		
				HARB (BLT)	ZB.6		
				*ABU ZEYD	ZB.7		
				3 daughters	ZB.8.D		
				JAMIL (APS) 1896 c [x BINT JAMILA (APS)] S2A ALI PASHA SHERIF / Egypt			RASHEED (KED) 1917 g [x ZAREEFA (BLT)] S1.1A BLUNT, Lady ANNE / Egypt 3 daughters: DS9, S1.1A, S1.2
3 daughters: DS4, S1.1, S1.2							
	WAZIR (APS) 1863 g [x GHAZIEH (AP)] S1 ALI PASHA SHERIF / Egypt	NADER EL KEBIR (APS) 1871 g [x SAMHA (AP)] S2A FOUNDATION ALI PASHA SHERIF / Egypt	daughter: NADRA EL KEBIRA (KDV) [DS1.1]				
	MAHRUSS (APS) ca.1875 g [x MAHROUSSA (APS)] W ALI PASHA SHERIF / Egypt	MAHRUSS (BLT) 1893 c [x BINT NURA (BLT)] DS4 ALI PASHA SHERIF / Egypt	RIJM (BLT) 1901 c [x *ROSE OF SHARON] KR BLUNT, Lady ANNE / UK (England)	*NASIK 1908 b [x NARGHILEH (BLT)] KD BLUNT, WILFRID / UK 3 daughters: KD (2), KR.3	RASIK 1929 c [x *RASIMA] KR.1 KELLOGG, W K	daughter: RABANNA [S4]	
	MERZUK (APS) 1887 c [x BINT JELLABIET FEYSUL (EGY)] KJ1 ALI PASHA SHERIF / Egypt	daughter: RIDAA (BLT) [KR]					
	*SHAHWAN 1887 g [x DAHMEH SHAHWANIYAH (APS)] DS6 ALI PASHA SHERIF / Egypt	daughter: YASHMAK (BLT) [KJ3]					
	4 daughters: DS2, DS4, S1 (2)	3 daughters: DS2, HS1, KJ1					

ZB.1: The Mesaoud (APS) sire line through Rejeb (BLT) — extant through Rejeb's daughters *Narda II and Rose of Hind (BLT)

First generation	Second generation
REJEB (BLT) 1897 c [x ROSEMARY (BLT)] KR BLUNT, WILFRID / UK	2 daughters: *NARDA II [KD], ROSE OF HIND (BLT) [KR.1]

ZB.2: The Mesaoud (APS) sire line through Seyal (BLT) to the sons of Ghadaf

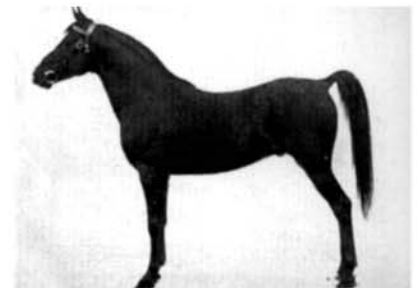
First generation	Second generation	Third generation	Fourth generation	Fifth generation	Sixth generation	Seventh generation	Eighth generation
SEYAL (BLT) 1897 g [x SOBHA (APS)] HS1 BLUNT, WILFRID / UK (England)	*BERK 1903 b [x BUKRA (BLT)] S4 BLUNT, Lady ANNE & WILFRID / UK (England)	HAMRAN (BLT) 1915 b [x HAMASA (BLT)] S1.1C CRABBET STUD / UK (England) RIBAL 1920 c [x *RIJMA] KR.3 BROWN, W R	HAMRAN II (RAS) 1930 c [x DURRA (BLT)] DS9 RAS / Egypt GHADAF 1929 c [x GULNARE] S1.1A BROWN, W R GHAWI 1930 c [x GULNARE] S1.1A BROWN, W R daughter: S4	daughter: HELWA (RAS) [DS1.1A]			
				JADIB	ZB.2A		
				SUBANI	ZB.2B		
				GHADAB	ZB.2C	— Sheradu in 1996	
				JOHN DOYLE	ZB.2D		
				ARDAN	ZB.2E		
				5 daughters	ZB.2F.D		
				daughter: VALIDA [S1.1B]			



Ghadaf (1929-1957) in old age, whose dam and paternal granddam are also tail male to Zobeyni. (Courtesy of the Doyle Family collection)



Bred in New Hampshire, Ribal stood at stud in Indiana before ending his career at Long Meadow Ranch in Arizona. (AHR Studbook photograph)



Hamran (BLT) (1915-1932), RAS Root Stallion #23, is represented in Heirloom by his granddaughter Helwa (RAS). (RAS Studbook photograph)